

Brunschwig & Fils | p. 20-21



Cape Comorin

Guest Room Tips | p. 5



Sarah Richardson



Furniture Feature | p. 6

Kravet

Lee Jofa

Brunschwig & Fils

GP & J Baker

TRENDING NOW

Each year, **TRADITIONAL HOME** names a group of emerging young designers from all over the country to its list of *New Trads*. Tapping into their celebrated styles, this year's bunch selected their must-have picks from **CuratedKravet.com**.

Allison Dehn Bloom | Dehn Bloom
Mill Valley, CA • dehnbloom.com

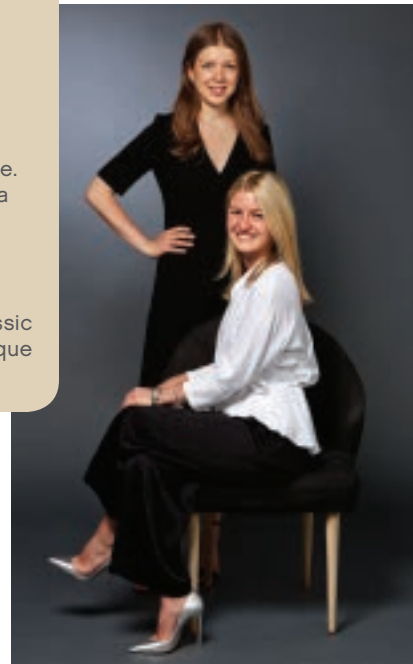
Coppage Tray Set
QR-14578.BLACKNATRL.0
"I love this tray for the pattern and softness it brings to the hard surface of a coffee table. Trays are a beautiful way to create vignettes and inject personality into a room."



Alyssa Kapito and Vivian Muller | Kapito Muller
New York, NY • kapitomuller.com

Carlberg Mirror
QR-14981.ANTGOLD.0
"I love the sculptural quality of this mirror and its Mid-Century Italian vibe. It would be very chic in a foyer or in a bathroom." – Alyssa Kapito

Aberdeen Mirror
QR-13148.GOLD.0
"The clean lines of this piece are classic but modern. I also love the light antique finish." – Vivian Muller



Krista Nye Nicholas and Tami Ramsay | Cloth & Kind
Ann Arbor, MI and Athens, GA • clothandkind.com

Trieste Mini Vase Set
QR-13328.BLACKWHITE.0
"We believe that a collection of items is the perfect way to add a personal story and heart to your space. A favorite go-to is handcrafted pottery like the Trieste Mini Vase Set. They are at once sculpture and lovely vessels for flora and fauna."

Robin Henry | Robin Henry Studio
Westport, CT • robinhenrystudio.com

Cubist Hand Knotted, 12' X 16'
QR-16003.MINI2X16.0
"With over 2,000 products to choose from, there is plenty to be inspired by on CuratedKravet.com. But one of my faves is this sophisticated, modern Tibetan wool and silk rug. This piece would really perk up any space – sold!"



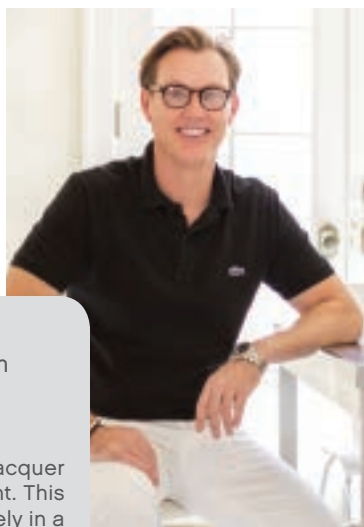
Ashley Waddell and Courtney Whatley | Olivia O'Bryan
Vero Beach, FL • oliviaobryan.com

Seale Wall Sconce
QR-14893.BRASS.0
"Beautifully simple and classic in design, this sconce can be used in most traditional or modern spaces. The scale of this fixture works perfectly beside a bed or in a cozy nook for reading. Surrounded by art, it could also serve as an unexpected detail to any wall. The brass and black finish make for an easy placement in most spaces."



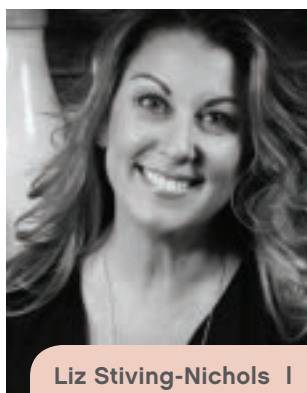
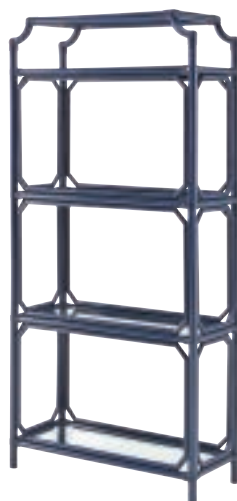
Meredith Ellis | Meredith Ellis Design
Los Angeles, CA and Austin, TX • meredithellisdesign.com

Devereaux Sconce
QR-13865.BRASS.0
"I'm immediately drawn to this sconce for its classic design and pretty brass finish. The black lamp shade adds a touch of dramatic sophistication perfect for quaint, moody spaces, such as a bookcase in a private paneled library or a chic marble Deco powder room."



Kevin Walsh | Bear Hill Interiors
Little Rock, AR • bearhillinteriors.com

Turtle Cay Etagere
QR-10962.NAVY.0
"I love the Turtle Cay Etagere. The navy lacquer is so classic and creates such a statement. This is a beautiful workhorse that would be lovely in a living room piled high with books and objet d'art. Equally impressive in a bathroom loaded with towels and apothecary."



Liz Stiving-Nichols | Martha's Vineyard Interior Design
Vineyard Haven, MA • mvidesign.com

Lamar Tray Set
QR-14880.MUSHROOM.0
"I've always been a sucker for shagreen, and the brass inlay is on-trend. There is something about the texture of shagreen that adds such visual interest to an otherwise simple form. The combination of these finishes allows these trays to become functional art."

