

luxe.

interiors + design®



RITE OF PASSAGE ENTRY HALL

ARKANSAS DESIGNER KEVIN A. WALSH REVEALS THAT SOMETIMES IT'S THE LEAST-EXPECTED ROOMS THAT CALL FOR NOTICE.

Your projects have such an air of sophistication about them. Of course, this space doesn't stray from that.

This space represents my fondness for beautiful architecture, a timeless mix of furnishings and a thoughtfully curated collection of objects. I was inspired by the striking architecture of Max Mayer, who designed the home in the 1920s. My objective was to preserve the architecture and create a formal yet family-friendly entrance.

It's a bit unexpected to be greeted by such grand architectural elements. What was the starting point?

We started this design by resurfacing the previously faux-finished walls and ceiling. The space was a bit dark, so we made it brighter by replacing the original flooring with a honed white Calacatta marble. I really wanted to let the original wood and intricate details shine through on the hand-carved oak doors, so we had them refinished and cerused.

The décor feels so natural here and brings such a perfect infusion of color.

Drawing your eye down the hallway is a special commissioned painting that adds a bit of drama. The ethereal watery blue piece also slides open to reveal a wall-mounted television. The cerulean velvet works perfectly with the fabric on the bench and was selected to give a punch of color to the gesso texture of the carved chair. The clients and I both love soft pastel rooms, so we tried to layer moments of color throughout to keep it interesting.

Artwork / Mallery Page / mallerypage.com.
Bench / Suzanne Kasler for Hickory Chair / hickorychair.com. Chair and Mirror / mrbrownhome.com. Chest / julianchichester.com.
Home Builder / Chuck Hamilton / Chuck Hamilton Construction / chuckhamiltonconstruction.com.
Interior Design / Kevin A. Walsh / Bear-Hill Interiors / bearhillinteriors.com. Lantern / visualcomfort.com.



PHOTO: NANCY NOLAN.

SPACE^{x3}

WITH A DISCERNING EYE FOR THE OPULENT, THREE VISIONARIES REFLECT ON THE DETAILS THAT COMPOSE THEIR DESIGNS.

WRITTEN BY HANNAH TOLES



PHOTO: RIKKI SNYDER.

NEUTRAL EXPRESSION LIVING ROOM

A GENTLE COLOR SCHEME LETS ARCHITECTURAL LINES AND STORIED ART SHINE THROUGH IN THIS WASHINGTON, D.C., SPACE FROM DESIGNER RAJI RADHAKRISHNAN.

You love to tell a story through your designs. Tell us the story of this particular room.

The client, a world traveler, was the main inspiration as she has a collection of art and antiques from various cultures and periods. When I first came to this space I thought of it as a modern-day Christopher Columbus story. The journey would begin in Asia, followed by Europe, and conclude at home here in Washington, D.C. Europe was, of course, the linchpin in this story, hence the mural.

Give us more detail on how the mural fits in with that story.

As I started planning the space I knew this particular wall had to be a focal point and I chose this Louis-Léopold Boilly painting as it sets the mood I was striving for—the soft gaze of the girl ironing tells so much and the painting itself offers a depth and character I really wanted to introduce in this otherwise very modern space. Although an old-world painting, it works perfectly among all the other varied art and furnishings.

Did you face any challenges when bringing life to this space?

The challenge was to connect the dots between the antiques and art while also being sensitive to the area of the home. Located in a neighborhood famous for its embassies and official residences, this apartment, although new and contemporary, resides on a street full of incredible federal and classical-style homes. The history of the area influenced the design, as well as the contemporary style of the apartment.

Floor Lamp / Serge Mouille / 1stdibs.com. Interior Design / Raji Radhakrishnan / Raji RM & Associates / rajirm.com. Mural / Raji RM Murals / rajirm.com. Shell Chair / Hans Wegner / 1stdibs.com. Side Tables / franceandson.com.

SITTING PRETTY DRESSING ROOM

DRESSING WELL GOES BEYOND ONE'S ATTIRE IN THIS FEMININE SAN FRANCISCO SPACE DREAMT UP BY DESIGNERS HEATHER HILLIARD, ERIN BIXLER AND PHEBE WILLIAMS.

This space is decidedly delicate. Walk us through your thought process.

We created a feminine space that would fashion a flattering environment in which to get dressed. Who doesn't want to feel beautiful before stepping out into the world each day? That idea led us to pursue soft neutral tones with a few shots of more saturated pinks and pale blues for contrast. Lighter colors work well in a dressing room, providing a neutral backdrop for a true read on clothing's color.

The lines and colors of the furnishings are so beautiful and steal the show.

We considered so many options for the wall treatment, but once we added the printed fabric, it felt like the perfect fit. Layered on top are a particularly special find of horsehair sconces; the shape is so unique and reminded us of jewelry. We love the depth of color and texture of horsehair and the application as part of a light fixture is particularly interesting. We custom-designed the dressing table with locked, velvet-lined drawers to provide a home for often-used jewelry pieces.

What is it about the art that seemingly ties everything together?

The painting above the dressing table is called *Siren* by Erin Lawlor. The movement in Lawlor's broad brushstrokes is incredibly dynamic and adds a sense of fluidity to the space. All of the furniture in the space has curves and soft edges, and the painting reinforces that language. It really brings life to this space.

Interior Design / Heather Hilliard, Erin Bixler and Phebe Williams / Heather Hilliard Design / heatherhilliard.com. Sconces / Apparatus Studio / cavaliergoods.com. Wall Fabric / China Seas / quadrillefabrics.com.

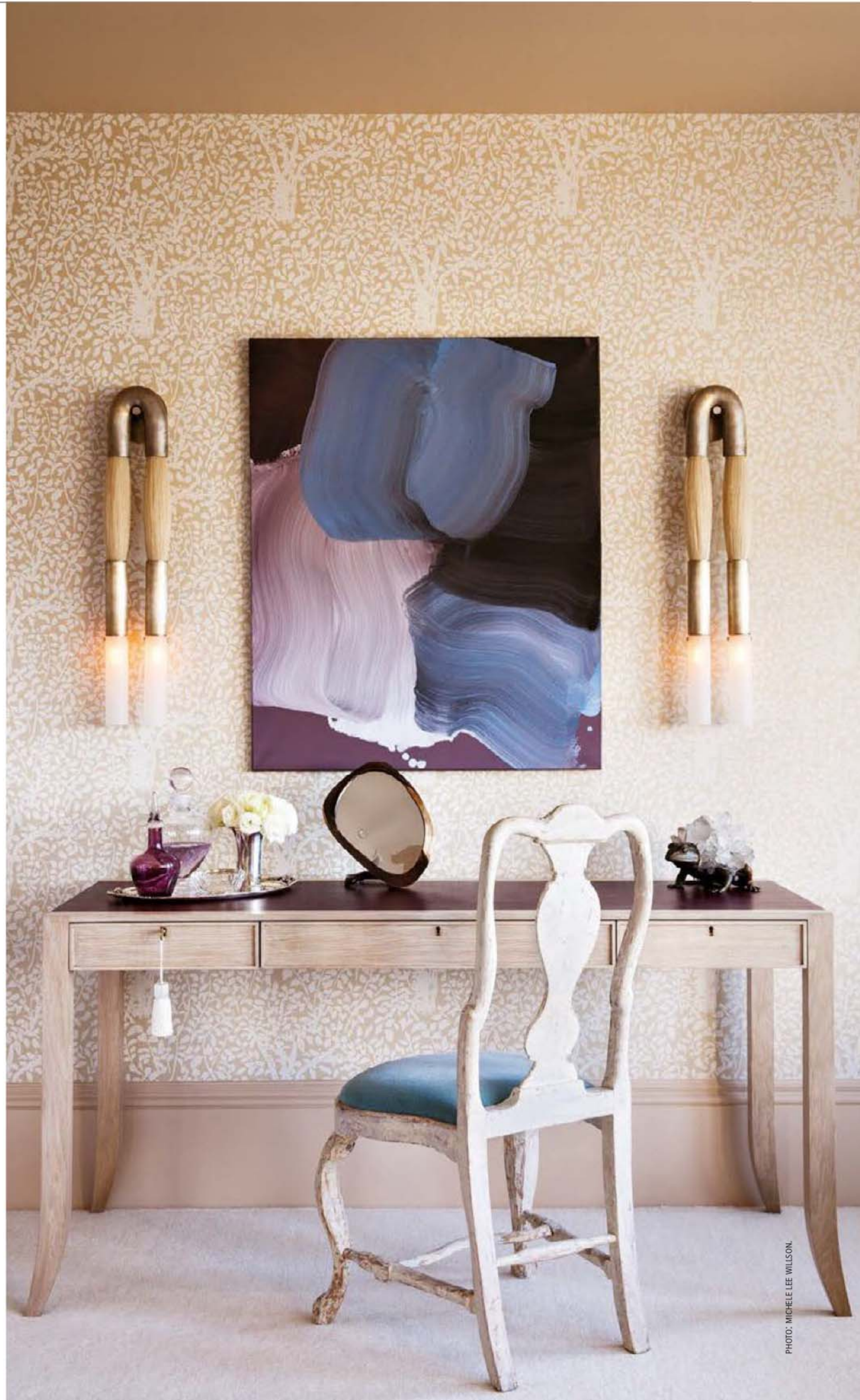


PHOTO: MICHELE LEE WILLSON.